

Intelligent and Wireless Large-area 3D Scanner

KSCAN-X

Boundless Vision, Unmatched Accuracy



Powered by SCANTECH's advanced wireless technology and adaptive photogrammetry, the KSCAN-X is an intelligent, wireless large-area 3D scanner that sets a new standard for large-scale 3D measurements.

Featuring wireless operation, ultra-wide scanning area, extended depth of field, and fast scanning, the KSCAN-X offers smooth and high-precision 3D measurements for ultra-large and large to medium-sized parts across industries such as aerospace, heavy industry, and rail transportation. Designed to boost efficiency and deliver accurate quality control, the KSCAN-X is the ultimate solution for advanced manufacturing.



Ultra-large scanning area
extended depth of field



High-speed quad-cross
blue laser scanning



More flexibility in scanning objects
ranging from ultra-large to medium



Deep hole measurement



Adaptive photogrammetry



Fully wireless measurement

Wide-Area Scanning Exceptional Precision

Ultra-large Scanning Area

KSCAN-X, powered by our in-house developed and sophisticated algorithms, offers extensive scanning area of up to 2.6m*1.8m, which is ideal for scanning ultra-large parts.

Ultra-large Depth of field

With a large depth of field ranging from 0.3-2.5m, KSCAN-X ensures precise measurements for everything from medium to ultra-large parts with exceptional quality. Its flexible working distance makes scanning various-sized parts easier and more efficient.



0.3m

2.5m

2.6m

1.8m

Truly Wireless Scanning

It operates completely wire-free, enabling seamless scanning even in power-limited environments, at heights, or in remote locations. Experience true wireless freedom in 3D measurement.



Robust on-board processing module
Handle large amounts of data efficiently



Dual-battery system
Ensures no-cable and continuous operations



Dual-WNIC design technology
Guarantees wireless, stable, and high-speed data transfer

Faster, and Smoother

Powered by innovative quad-cross blue laser technology and a high-frame-rate processing chip, KSCAN-X delivers a major leap in measurement efficiency. It delivers fast and precise measurements for large parts even in harsh environments.

4*21
Quad-cross blue laser lines

180fps
High frame rate

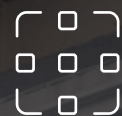
6,450,000 measurements/s
Scanning rate up to

Fewer markers
Smoother and more efficient scanning



Versatile Applications

Ultra-large Parts | High Efficiency



Large-area scanning

With 4*21 blue laser lines, KSCAN-X enables highly efficient large-area scanning, capturing extensive surfaces in a single scan. It achieves exceptional accuracy of up to 0.075 mm, with volumetric accuracy reaching 0.075 mm + 0.010 mm/m.



Adaptive photogrammetry

With an advanced adaptive photogrammetry system, KSCAN-X ensures exceptional accuracy over long distances. It eliminates cumulative errors and ensures consistent volumetric accuracy, delivering high-precision results for both large-scale and detailed measurements, even in challenging environments.

Medium to Large-sized Parts | Capture Fine Details

KSCAN-X's medium-distance scanning mode, with 27 blue laser crosses, is designed for scanning parts ranging from 0.5 m to 2 m. It captures intricate details with up to 0.030 mm accuracy, ensuring precise quality inspection of medium to large-sized parts, even with complex curves or fine features.



Deep Hole Measurement | No Blind Spots

KSCAN-X offers a more compact and lightweight design compared to similar products. Featuring a shorter baseline and a dedicated blue laser line for deep-hole detection, it excels at capturing hard-to-reach areas like pipe interiors and gear teeth, ensuring complete and accurate data collection, even in hard-to-reach areas.



Power and Comfort in One Design



Well-structured visual framework highlights key components like the camera lens and laser system, making operation seamless.



Engineered for comfort and efficiency, it ensures a secure grip and fatigue-free use, even during long scanning sessions.



Designed with both ergonomics and aesthetics in mind, KSCAN-X combines sharp, dynamic lines with a balanced, intuitive layout.

Portable & Easy to Use

Step 1 Compact & Ready to Go

Lightweight design with a portable protective case—easy to carry and set up. An optional multi-functional case keeps all accessories organized.



Step 2 Wireless Connection

No cables, no hassle—just power on and start scanning anywhere.



Step 3 Fast Calibration

Quick 20-s calibration saves time and streamlines on-site work.



Step 4 Smart Controls Effortless Operation

One-touch smart buttons handle complex functions without a computer.



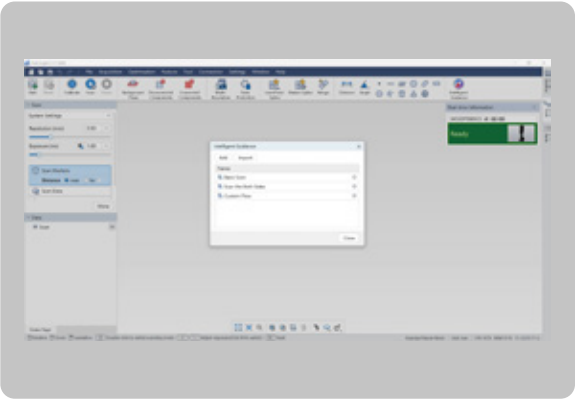
Touchscreen Interface

Built-in full-color touchscreen for real-time hardware and software status updates.



Smart Guidance

User-friendly software with customizable prompts for quick on-board and lower training costs.



All-in-One Metrology Software

Powered by the next-gen DefiniSight platform, KSCAN-X is built for industrial-grade 3D scanning and inspection, offering an intuitive interface, broad compatibility, and high-speed data processing for an enhanced metrology experience.

01

Easy to Use

Smart, streamlined workflows for effortless operation.

02

For Everyone

Designed for both beginners and experts.

03

Seamless Scanning

Instant startup with real-time data capture and packaging.

04

High-Resolution Detail

Supports real-time mesh visualization for faster data capture and finer data quality.

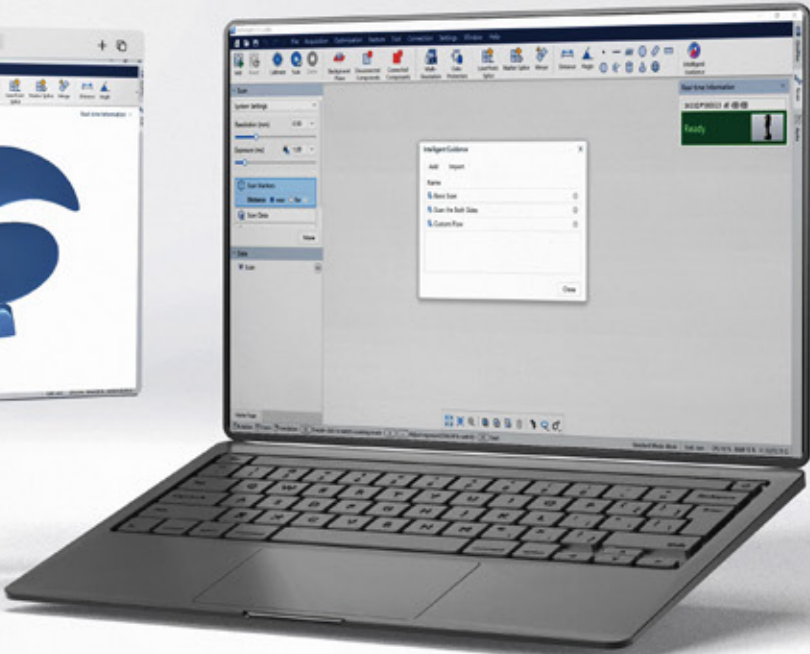
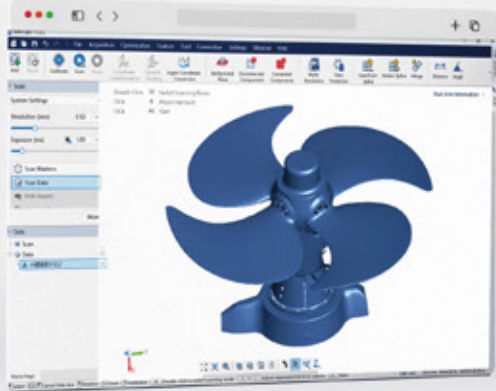


Supports real-time monitoring

Comes with a standard mobile phone holder for on-the-go and real-time scanning data viewing.



Customizable buttons



| KSCAN-X Technical specifications | | |
|----------------------------------|-------------------------------|--|
| Scan mode | Large area scanning | 84 blue laser lines |
| | Medium-distance scanning | 54 blue laser lines |
| | Deep hole scanning | 1 extra blue laser line |
| | Photogrammetry | Adaptive photogrammetry |
| Accuracy (1) | Medium-distance scanning | 0.030 mm |
| | Large area scanning | 0.075 mm |
| Volumetric accuracy (1)(2) | | 0.075 mm + 0.010 mm/m |
| Scanning rate up to | | 6,450,000 measurements/s |
| Scanning area up to | | 2600 mm × 1800 mm |
| Working distance | | 0.30 m ~ 2.50 m |
| Object size | | 0.5 m ~ 15 m |
| Laser class | | ClassII (eye-safe) |
| Resolution up to | | 0.1 mm |
| Dimension | | 344 mm × 124 mm × 99 mm |
| Stand-off distance | | 235 mm |
| Connection | Interface mode | USB3.0 Type-B |
| | Wireless standard | Wi-Fi 6, 802.11a/b/g/n/ac |
| | Wireless connection | Support Dual WNIC |
| | Intelligent and wireless mode | Support |
| | Uninterrupted power supply | Support |
| Environment Adaptability | Operating environment | Fanless, suitable for workshop environments |
| | Operating temperature range | -10°C ~ 40°C |
| | Operating humidity | 10% ~ 90% RH |
| | Protection rating | IP50 |
| Patent | | CN204329903U, CN104501740B, CN104165600B, CN204988183U, CN204854633U, CN204944431U, CN204902788U, CN105068384B, CN105049664B, CN204902784U, CN204963812U, CN204902785U, CN204902790U, CN106403845B, CN209197685U, CN209263911U, CN106500627B, CN106500628B, CN206132003U, CN206905709U, CN107202554B, CN209310754U, CN209485295U, CN209485271U, CN305446920S, CN209991946U, US10309770B2, KR102096806B1, KR102209255B1, US10914576B2, CN113470180B, CN113218417B, CN113063370B, CN218411073U, CN113310427B, CN113074659B, CN218772495U, CN113473034B, CN115830249B, CN219829786U, CN116206069B |

(1) ISO 17025 accredited: Performance is evaluated based on JJF1951 specification, VDI/VDE 2634 Part 3 standard.
(2) Paired with 800-mm high-precision scale bar.
*Our company reserves the right to interpret and modify the parameters and images in this manual within the scope of law.

