



3DeVOK

The Choice for Professionals
Light Up the Path to 3D Innovation

3DeVOK MQ

Professional-Grade 3D Scanner

Dual-Mode · Versatile · Marker-Free · Wireless · Invisible Scanning

Dual-mode

22-line infrared laser & infrared speckle
(Two distinct FoV)

Detailed

0.1mm resolution captures even the finest details

Accurate

Up to 0.08mm accuracy for highly detailed scans

Fast

4.5 million points per second, rivaling industrial-grade device



Marker-free

Infrared laser and speckle enable non-marker scanning

Invisible Scanning

Dual infrared light sources, invisible to the human eye, ensuring greater safety and comfort

Vivid

24-bit color + texture mapping for true-to-life colors

Wireless

Optional wireless handle for easy large-object scanning

Why Choose MQ?

Affordable and Value-Packed

Featuring 22-line infrared laser and infrared speckle (two distinct FoV) technology, MQ delivers full-size scanning from 5cm to 5m with ease, handling both indoor and outdoor scanning effortlessly.

Friendly and Professional

With a flexible scanning range of 150-1500mm, even first-time users can achieve professional results with ease.

Enhancing Education

MQ offers user-friendly software for hands-on training in fields like mechanical design, art, archaeology, and medical design.

Versatile and Reliable

MQ adapts seamlessly to diverse applications—becoming the ultimate 3D tool for 3D printing farms, design studios, and small to medium-sized businesses.

3DeVOK MQ Technical Specifications		
Light Sources	22 Infrared Laser Lines (Invisible)	Infrared VCSEL Structured Light (Invisible)
Class of Lasers	Class I (Eye-safe)	
Scan Modes	Infrared Laser Lines Supports markerless and invisible-light scanning	Infrared Linear-array Structured Light (Speckle) Supports markerless scanning, invisible-light scanning, partial fine scanning, and rapid scanning at ultra-long-distance range and ultra-large FoV
Wireless Scanning	Support (with an optional handle)	
Accuracy*	Up to 0.08 mm	
Point Distance	0.1 - 5 mm	Regular Scan: 0.2 - 5 mm, Fine Scan: Up to 0.1 mm
Alignment Mode	Support hybrid, markers, texture, and geometric features alignment	Support hybrid, texture, and geometric features alignment
Ability to Capture Texture	Yes	
Scanning Distance	150 - 1,000 mm	150 - 1,500 mm
Field of View	140 mm × 140 mm - 490 mm × 490 mm	50 mm × 75 mm - 1,100 mm × 1,000 mm
Scanning Frame	Up to 70 FPS (Marker alignment)	Up to 30 FPS
Scanning Speed	Up to 2,450,000 Points/s	Up to 4,500,000 Points/s
Output Formats	*.obj, *.stl, *.ply, *.asc, *.mk2, *.txt, *.epj, *.apj, *.spj, *.map, *.sk	
The Ability for 3D Printing	Supports .stl, .obj and other formats	
Working Temperature Range	0 ~ 40 °C	
Working Humidity Range	10% - 90% RH (Non-condensing)	
Interface	USB 3.0	
Scanner Dimensions & Weight	Dimensions: 215 mm × 73 mm × 53 mm; Weight: 550 g	
Power Source	DC: 12 V, 5.0 A	
Certifications	CE-EMC, FCC, RoHS, IEC 60825, IEC 62471, IEC 60529-IP50, WEEE, KC	
Recommended Configurations for PC	OS: Win10/Win11, 64-bit; CPU: i7-13650HX and above; RAM: 32GB and above; Graphic Card: NVIDIA discrete graphics card, NVIDIA RTX3060 and above; Graphics memory: 6GB and above	

* The laboratory theoretical accuracy test results are subject to uncertainty errors.



Industrial-grade Excellence, Next-generation Magic Tool

3DeVOK MT

Professional 3D Scanner

34 blue laser lines + 22 infrared laser lines + Large-area infrared speckle



Efficient

No Markers Needed

Marker-free 3D scanning is supported across three light source modes, ensuring easy operations. Its plug-and-play design further enhances on-site scanning efficiency.

Advanced Hybrid Alignment

With advanced alignment technologies for geometry, texture, and target, it ensures smooth alignment with minimal or no targets, whether scanning surfaces rich in geometry and feature or those with limited features, for effortless and intuitive operation.

Fast and Stable Scanning

Capture data at a rate of up to 4.5 million points/s with a high frame rate of 70 fps. Scanning area per frame covers up to 1100 mm*1000 mm, offering smooth and stable scans of medium to large objects.



Flexible

Multi-Size Scanning

It supports the scanning of objects ranging from 0.05 m to 5 m, making it perfect for all kinds of parts, medium to large items, art pieces, human body scans, and more.

Adaptable to Various Environments

Perform efficiently in indoor, outdoor, low-light, and even direct sunlight conditions, ensuring reliable results in any setting.

Handles Complex Materials

No powder is needed to scan challenging surfaces, including black and reflective objects, black hair, and multi-colored items.



Robust

Exceptional Resolution

Achieve a maximum resolution of 0.05 mm, accurately capturing complex textures and intricate details for objects over 5 cm.

High Precision

Accuracy reaches up to 0.04 mm+0.06 mm/m in marker-based alignment mode. Offers highly accurate and high-quality 3D data thanks to its real-time meshing algorithms.

Vivid Color Restoration

Support 24-bit high-definition color scanning, enhanced by high-resolution camera images and texture mapping, delivering true-to-life texture and color reproduction of objects.



Special Features

3 Types of Light Sources

34 blue laser lines | 22 infrared laser lines | Large-area infrared speckle

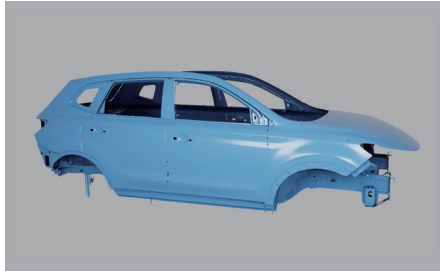
No-marker 3D Scanning

Large-scale Scanning

Invisible Light Scanning

Scanning area: 1100 mm*1000 mm | Scanning distance: 1500 mm

Versatile



| Car Modification



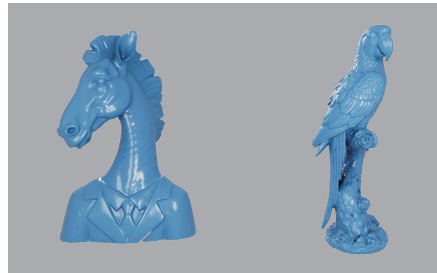
Reverse Engineering



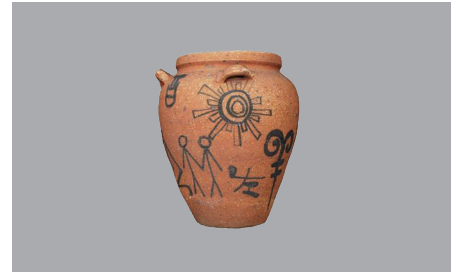
Human Digitization



3D Display



Artistic Design



| Cultural Heritage

3DeVOK MT Technical Parameter			
Light Source	34 Blue Laser Lines	22 Infrared Laser Lines	Infrared VCSEL Structured Light
Laser Class	Class II (Eye-safe)		Class I (Eye-safe)
Scan Mode	Blue Laser Lines	Infrared Laser Lines	Infrared Linear-array Structured Light-Speckle
	Supports markerless scanning	Supports markerless and invisible-light scanning	Supports markerless, invisible scanning, partial fine scanning, and rapid scanning at ultra-long-distance range and ultra-large FoV
Basic Accuracy *	Up to 0.04 mm		
Volumetric Accuracy *	Up to 0.04 mm + 0.06 mm/m		
Point Distance	0.05-5mm	0.1-5mm	
Alignment Mode	Hybrid, marker, texture, and feature alignment		Hybrid, texture, and feature alignment
Ability to Capture Texture	Yes		
Scanning Distance	150-1000mm		150-1500mm
Field of View	140mm × 140mm - 490mm × 490mm		50mm × 75mm - 1100mm × 1000mm
Scanning Rate	Up to 3,300,000 Points/s	Up to 2,450,000 Points/s	Up to 4,500,000 Points/s
Output Formats	*.obj, *.stl, *.ply, *.asc, *.mk2, *.txt, *.epj, *.apj, *.spj, *.map, *.sk		
Operating Conditions	0-40°C, 10%-90% RH (non-condensing)		
Interface	USB 3.0		
Scanner Dimensions & Weight	Dimensions: 215 mm × 73 mm × 53 mm; Weight: 620 g		
Power Source	DC: 12 V, 5.0 A		
Certifications	CE-EMC, FCC, RoHS, IEC 60825, IEC 62471, IEC 60529-IP50, WEEE, KC		
Recommended Configurations for PC	OS: Win10/Win11, 64-bit; CPU: i7-13650HX and above; RAM: 32GB and above; Graphic Card: NVIDIA discrete graphics card, NVIDIA RTX3060 and above; Graphics Memory: 6GB and above		

* The laboratory theoretical accuracy test results are subject to uncertainty errors.